

FOR LEASE - 135,000 SQ.FT.
5201 Phillip Lee Dr - Fulton Industrial

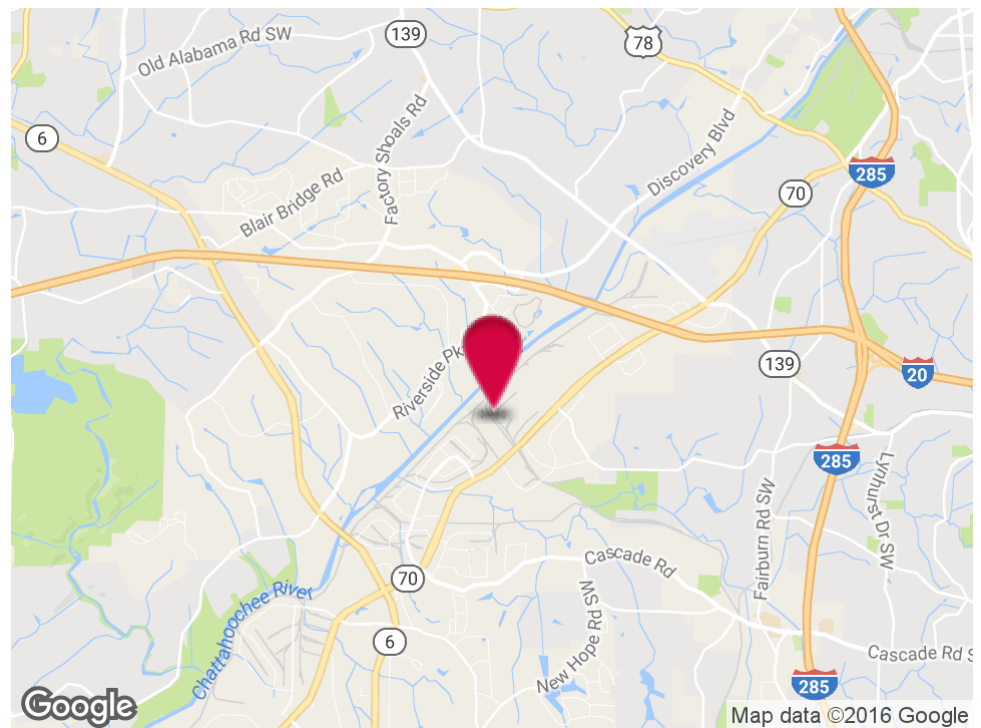


LISTING SUMMARY

Available SF:	135,000 SF
Lot Size:	4.62 Acres
Year Built:	1975
Building Size:	135,000 SF
Zoning:	M2

PROPERTY HIGHLIGHTS

- 2,500 SF Office
- 22' Clear Height
- 15 Dock High Doors
- 1 Drive - In Door
- 50' Wide Columns
- Fenced Truck Court
- Active CSX Rail To Building
- Zoned M2 Heavy Industrial



For More Information Contact:

WILSON COVINGTON
Senior Vice President
404.942.2073

RANDALL BRYAN
Sales Associate
404.942.2015

wcovington@kingindustrial.com

rbryan@kingindustrial.com

1920 Monroe Dr., NE. Atlanta, GA 30324 • 404.942.2000 • www.kingindustrial.com

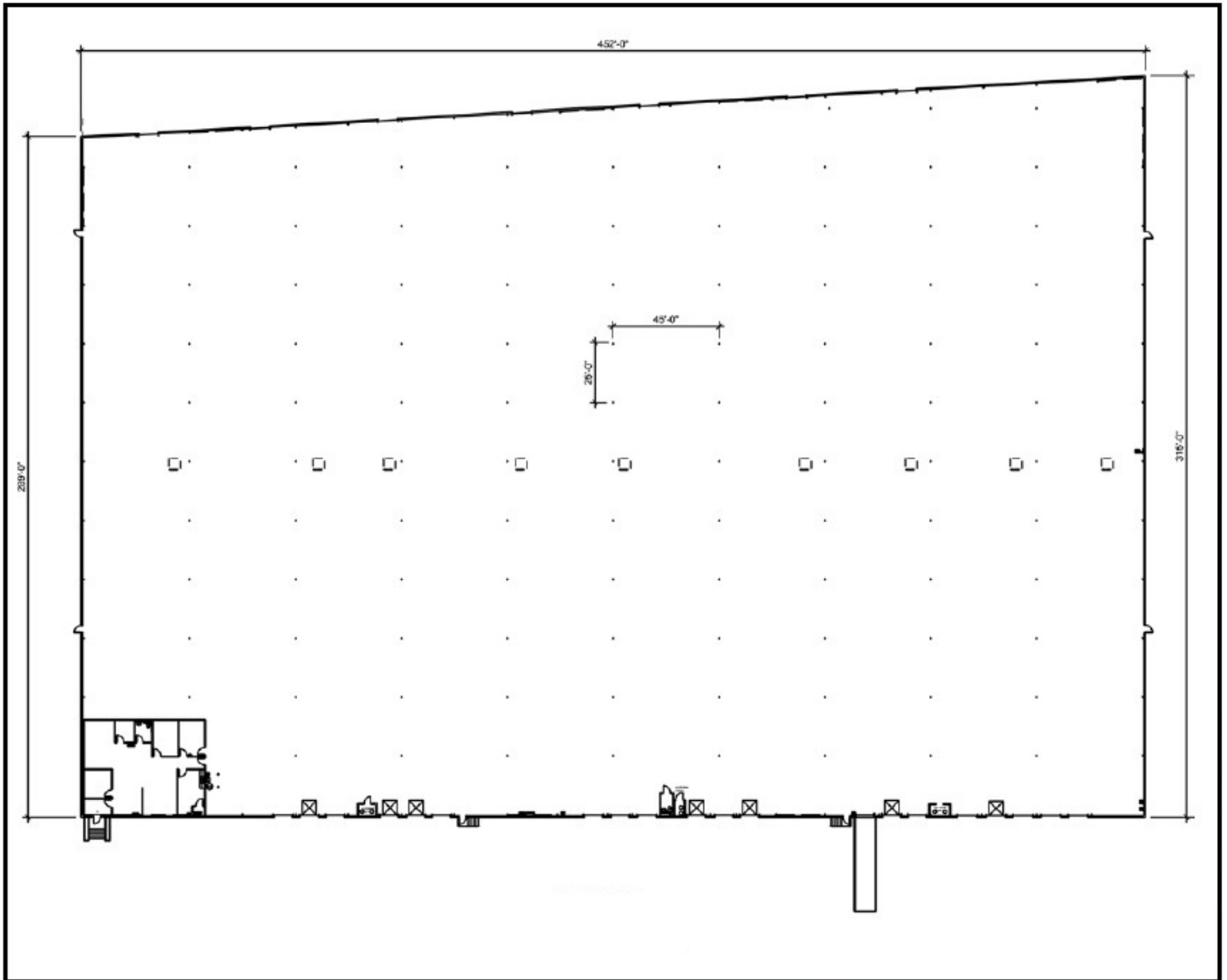
Every effort has been made to provide accurate information, but no liability is assumed for errors and omissions



FOR LEASE

135,000 SF Available

5201 Phillip Lee Road, Atlanta, GA 30336



For More Information Contact:

WILSON COVINGTON

Senior Vice President

404.942.2073

wcovington@kingindustrial.com

RANDALL BRYAN

Sales Associate

404.942.2015

rbryan@kingindustrial.com

1920 Monroe Dr., NE. Atlanta, GA 30324 · 404.942.2000 · www.kingindustrial.com

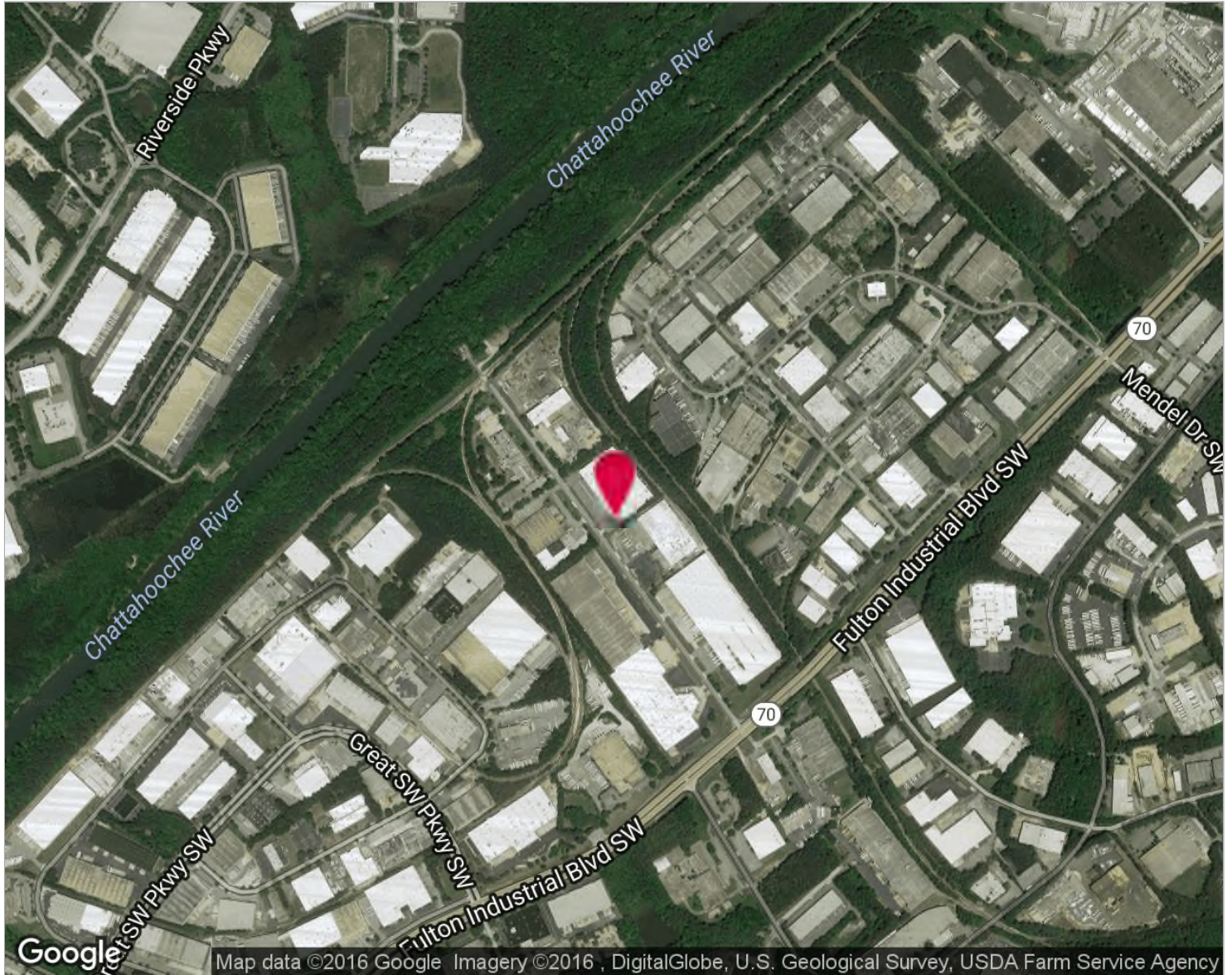
Every effort has been made to provide accurate information, but no liability is assumed for errors and omissions



FOR LEASE

135,000 SF Available

5201 Phillip Lee Road, Atlanta, GA 30336



LOCATION DESCRIPTION

This property is located in the Fulton Industrial District in Atlanta, GA

For More Information Contact:

WILSON COVINGTON

Senior Vice President

404.942.2073

wcovington@kingindustrial.com

RANDALL BRYAN

Sales Associate

404.942.2015

rbryan@kingindustrial.com

1920 Monroe Dr., NE, Atlanta, GA 30324 · 404.942.2000 · www.kingindustrial.com

Every effort has been made to provide accurate information, but no liability is assumed for errors and omissions

